

Service Letter #: SL11-1542000

Date: 09/09/2015

Part/Assembly #: 15-42000 Nose Landing Gear Assembly, Aerocet Model 1500 Floats.

Float Model/Aircraft Affected: 1500 Amphibious Model Floats, Float Serial Numbers 0415-04-1500 and prior.

Subject: Product Improvements on Aerocet Nose Gear Assembly P/N 15-42000.

This service letter is notification of the following product improvements by Aerocet, Inc. to the Nose Gear Assembly Model 1500 (Aerocet P/N 15-42000). These product improvements have been incorporated into new 1500 Float Models with production numbers 0615-01-1500 and later.

15-42201 Gear Link, Nose Gear

A design change has been made to add thickness to the mount portion (Fig. 1) and add another mount to the other side (Fig. 2). The Gear Link design change is being made to provide a double shear load design.

15-42100 Lower Nose Gear Assembly

A modification was made to P/N 15-42016 Rear Pin, Lower Nose Gear, changed material to stainless from aluminum. P/N 15-42122 Plain Bearing, Flanged, Nose Gear, and 15-42124 Plain Bearing, Nose Gear. Bearings manufactured with C630 Aluminum Bronze, this modification will enhance performance and operation of the lower nose gear.



Figure 1

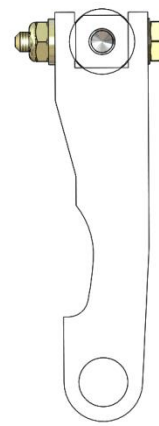


Figure 2

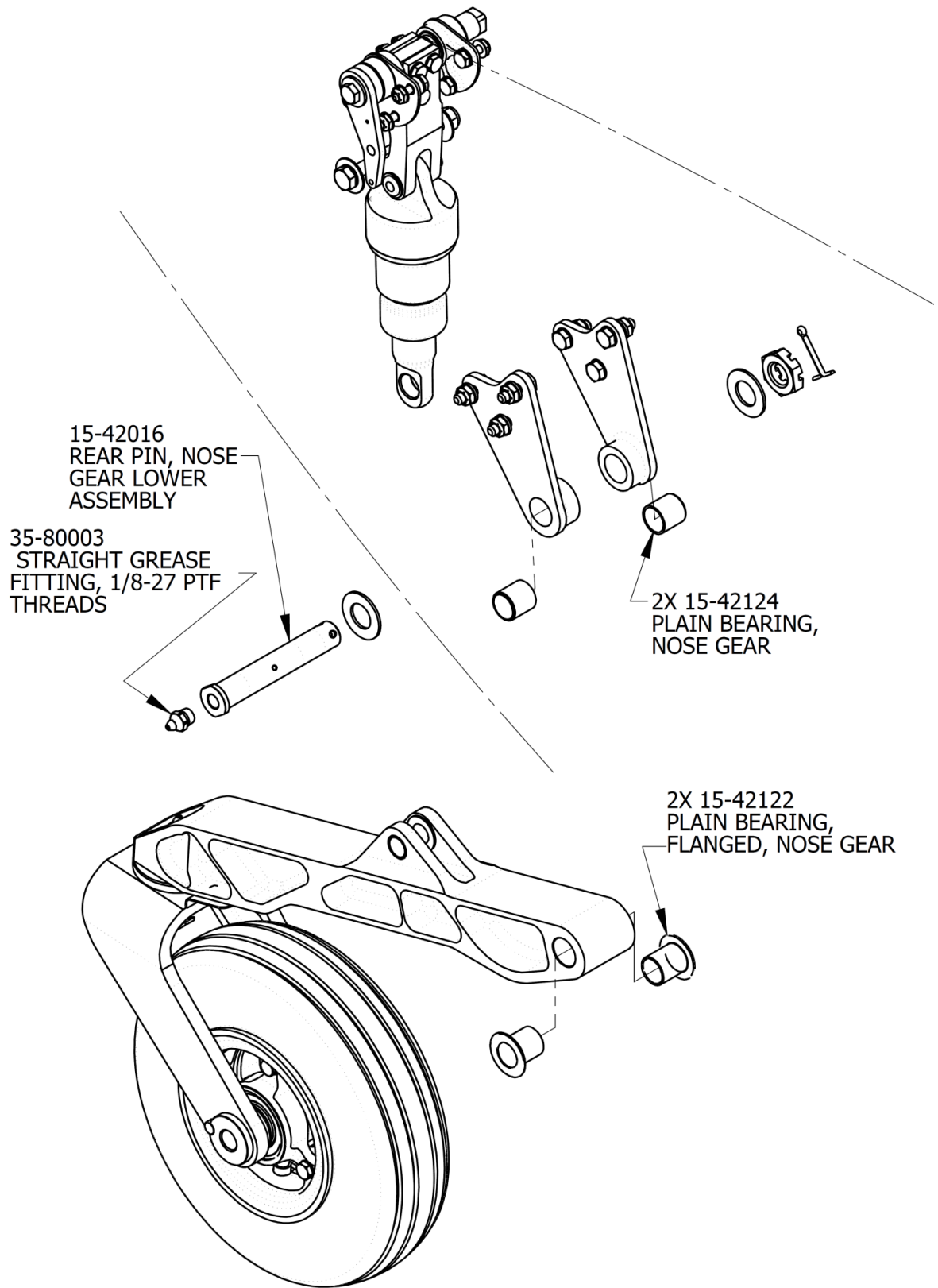


Figure 3 – Showing affected portions of nose gear assembly. Note orientation and locations of bushings.

Corrective Action Recommended:

Replace 15-42201 Drag Link, Nose Gear with associated replacement hardware as shown in (Fig 2).

Replace TFI-1011-12 I-Glide Bushing with 15-42124 Plain Bearing and TSI-1011-12 I-Glide Bushing with 15-42122 Plain Bearing, Flanged (Fig. 3). Note: It is recommended not to remove Lower Attach Brackets from float to install 15-42124 Plain Bearings.

Install new 15-42016 Rear Pin with supplied hardware and tighten nut (do not install cotter pin at this time). Prior to attaching Oleo Assembly to the Lower Gear Arm (Fig. 3) ensure the gear arm moves freely up and down with minimal resistance. Install Grease Fitting and begin to lubricate while moving the gear arm up and down, continue until bearings and pin are properly coated. Double check bearing pre-load, make adjustments if required and install cotter pin.

This is to be accomplished during the next scheduled maintenance period, not to exceed the next 100 hour or annual inspection.

Upgrade Kit Parts List:

- (2) 15-42201 Gear Link, Nose Gear
- (2) 15-42016 Rear Pin, Lower Nose Gear Assembly
- (4) 15-42124 Plain Bearing , Nose Gear
- (4) 15-42122 Plain Bearing, Flanged, Nose Gear
- (4) MS21083N3 Nut
- (4) AN3-12A Bolt
- (2) 35-80003 Straight Grease Fitting, 1/8-27 NPT Thread
- (2) MS24665-300 Cotter Pin
- (4) MS16624-4037 Retaining Ring
- (2) MS16624-4050 Retaining Ring
- (2) AN320C10 Castle Nut
- (4) TFI-0607-06 I-Glide Bushing

Time Required: 1 hour 15 minutes per side

Note: Aerocet, Inc. to provide the parts and hardware at no cost. At the owner's discretion all labor costs for replacement and installation of the upgraded parts are to be covered at the owner's expense.

END