

# SERVICE LETTER SL47 65-17190 Rev A



1. Release Date: 02/11/2020
2. Service Letter No.: SL47 65-17190
3. Subject: LSP Cable Installation
4. Part/Assembly No.: 65-17190
5. Float Model Affected: 6650 and 6750
6. Compliance:  Mandatory  Recommended  Optional
7. Approval: All information provided is in accordance with approved data.
8. Corrective Action: Non-required.
9. Time Required: Approximately 1 hour.
10. Payments:  Credit to Customer  Under Warranty  Customer Pays

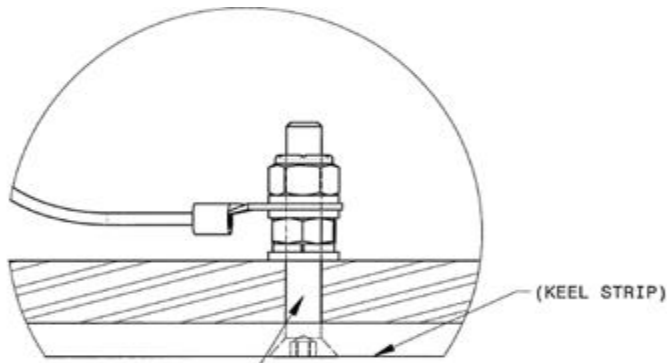
The current lightning strike protection (LSP) configuration is connected through use of keel installation fastener at Float STA. -4.63 which falls inside the Main landing Gear (MLG) box. That was in turn routed aft to the next fastener for the aft keel strip.

The purpose of this service letter is to explain the move of the LSP connection between fore and aft keel strips at the MLG so that it does not penetrate the gear box, and is therefore, higher in the waterline. This will eliminate sealing issues sometimes encountered where the wire passes through the box below the waterline. The LSP wire connection at the nose gear moved outboard for better access and increased distance from hydraulics.

The wire connection and hardware were moved to the next forward keel strip installation hole, allowing the LSP wire to only penetrate the bulkhead, which is inside the sealed compartment, and routed to the aft termination (unchanged).

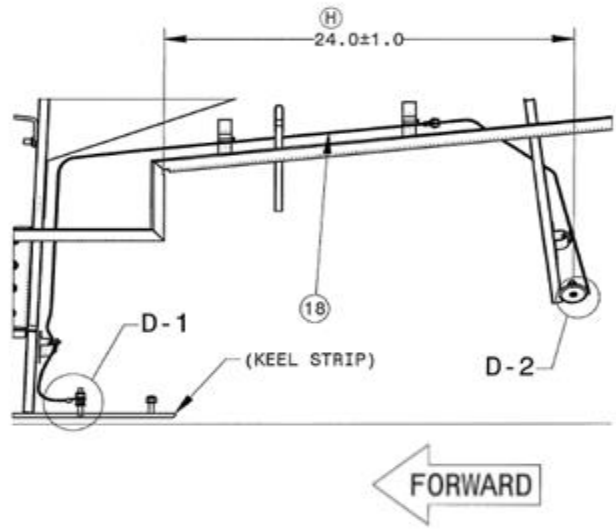
Routine maintenance checks should alert you to potential sealing issues.

### Previous Configuration MLG Location

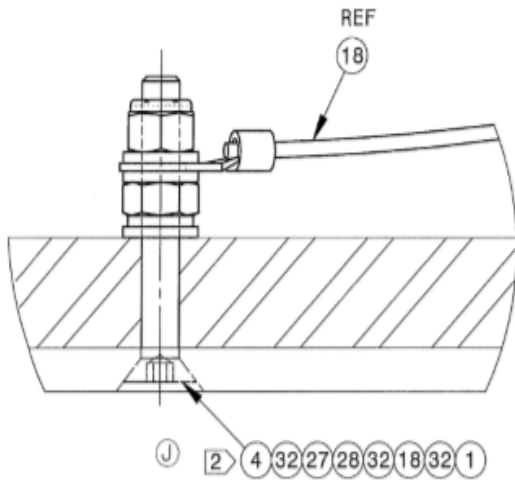


① 27 32 18 32 28 32 4 ②

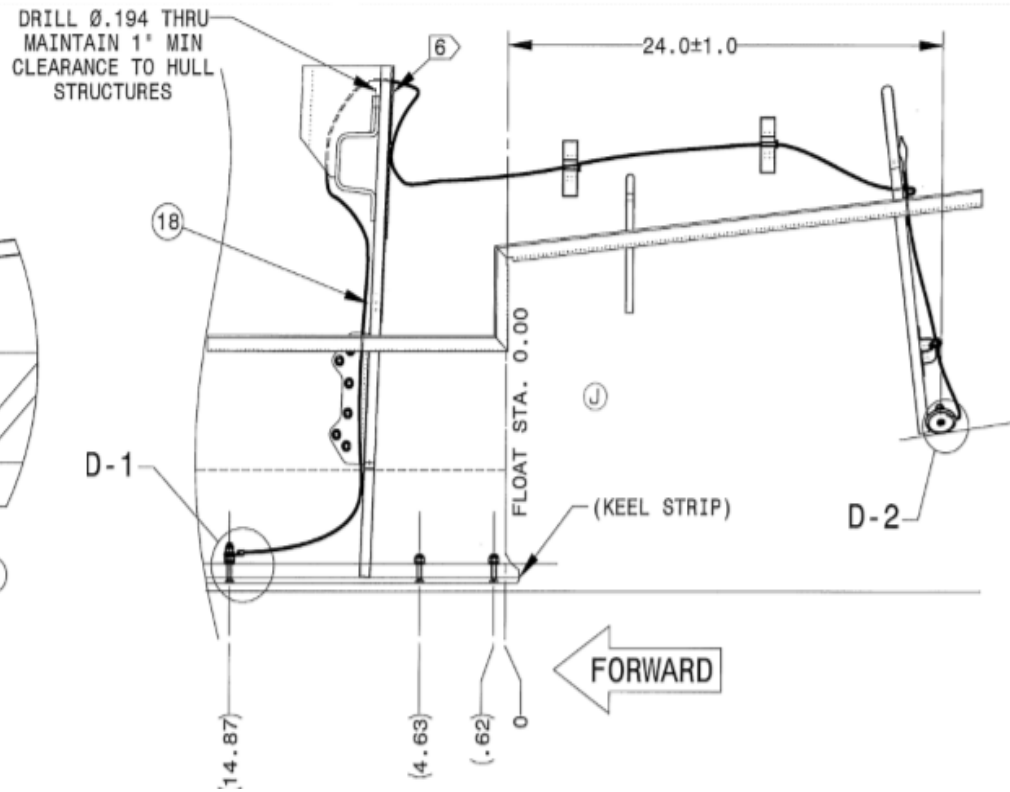
**DETAIL D-1**  
WHEEL WELL ROUTING  
SCALE 1 : 1



### New Configuration MLG Location



**DETAIL D-1**  
WHEEL WELL ROUTING  
SCALE 1 : 1



NOTE CHANGES ON DRAWING

Sheet 1

Note 5 changed to:

5. USE TECHFLEX™ “FLEXO FR” EXPANDABLE SLEEVING TO PREVENT CHAFING OF CABLE AGAINST SURFACES WHERE NECESSARY. SECURE ENDS OF SLEEVING WITH MS3367-4-9 TIE WRAPS OR HEAT SHRINK SLEEVING, SUCH AS MS23053/4-302 OR M23053/5-305. M23053 SLEEVING SHALL BE FLEXIBLE, CLASS 3, COLORATION OPTIONAL, SIZE AS REQUIRED.

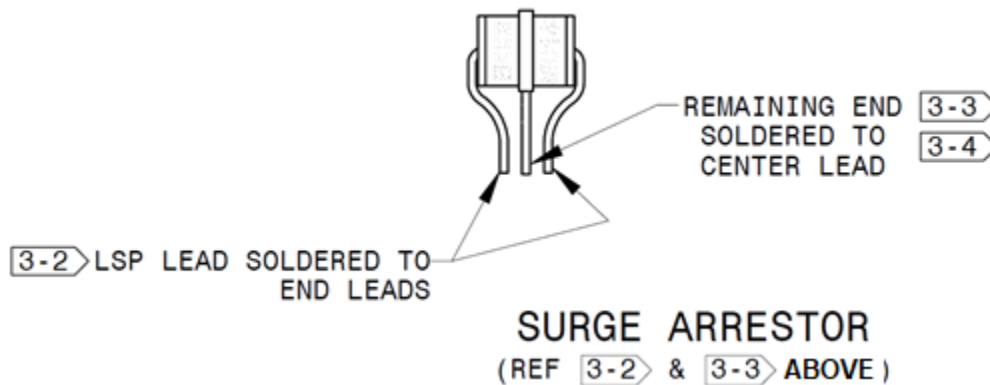
Note 9 (NEW)

9. INSULATION SLEEVING DIAMETER MAY BE ADJUSTED AS NECESSARY TO ASSURE PROPER FIT. USE M23053/5, CLASS 3 WHERE SEALING IS REQUIRED. M23053/5 OR SIMILAR IS SUITABLE WHERE USED TO SECURE ITEMS OR TO PROVIDE CAFÉ PROTECTION.

NOTES Sheet 3 Surge Arrester Installation

3-1 Cut LSP cable at suitable location near partial bulkhead

- 3-2 COMBINE EACH END LEAD OF SURGE ARRESTER AND SOLDER TO ONE END OF LSP CABEL. ALTERNATIVELY, LSP LEAD MAY BE DIVIDED EQUALLY AND EACH HALF THEN SOLDERED TO ONE ARRESTER LEAD.
- 3-3 SOLDER CENTER LEAD OF SURGE ARRESTER TO OTHER END OF LSP
- 3-4 CENTER LEAD OF SURGE ARRESTER SHALL BE SHRINK WRAPPED AND INSULATED FROM END LEADS USING m23053/4-301 OR -302, OR M23053/5-305. (APPROX. 3-4 INCHES LENGTH) m23053 SLEEVING SHALL BE FLEXIBLE, FLAME RESISTANT OR RETARDANT PREFERRED, COLORATION OPTIONAL, SIZE AS REQUIRED
- 3-5 SHRINK WRAP ENTIRE SURGE ARRESTER AND LEADS USING M23053/4-304 (APPROX. 1.5 INCHES LENGTH). END SHALL BE SEALED. (PINCH OPEN END DURING HEATOSHRINKING PROCESS, ALLOWING THE SEALING ELEMENT TO BOND TO ITSELF



Sheet 5 Change

The LSP wire length increased and is now M83413/8G100CB.

**NOTE:** For plugging hole left on float when old configuration LSP removed , lightly sand the area to a smooth surface, clean it thoroughly and apply at least two layers of 2" x 2" or Ø2" of 7781.

PARTS KIT FOR 65-17190 LSP CABLE INSTALLATION (MLG)					
ITEM NO.	QTY	TYPE	PART NUMBER	DESCRIPTION	COMMENTS ALTERNATIVES
1	1	HRDWR	1/4 – 20	NUT, SELF LOCKING, 18-8 OR 300 SERIES STAINLESS	
4	1	HRDWR	1/4 – 20 X 1.75 FAS	FLAT SOCKET CAP SCREW, 82°, 18-8 OR 300 SERIES S/S	
18	1	HRDWR	M83413/8-G100CB	LSP BOND WIRE	
27	1	HRDWR	MS35338-139	SPLIT LOCK WASHER STAINLESS	
28	1	HRDWR	MS35649-2254	NUT, PLAIN, HEXAGON, COURSE THREAD, 1/420	
32	3	HRDWR	NAS1149C0463R	WASHER, FLAT, STAINLESS	

Rev	Date	Summary of Change	Authorized by
I/R	02/07/2020	Initial Release	LM
A	02/11/2020	Add Revision Table	LM

-END-