

SERVICE LETTER SL38 66-12020

1. **Release Date:** 09/29/2017
2. **Service Letter No.:** SL38 66-12020
3. **Reason for Change:** Part Marking on Deck Fittings
4. **Part/Assembly No.:** 66-12020, 66-12151 (R&L) and 66-12152 (R&L)
5. **Float Model Affected:** 6650 and 6750
6. **Disposition of Product in Field:** Inspection required, remove or permanently blot incorrect part number if necessary, identify with a reference marking (such as FWD-L or MID-L) & repositioning required if necessary.
7. **Approval:** All information provided is in accordance with approved data.
8. **Corrective Action:** Reinstall deck fittings to correct position if needed.
9. **Time Required:** 2 hours
10. **Payments to Customer:** None

Notes:

Deck fittings may have been sent out with incorrect part marking. Although unlikely, some FWD fittings (66-12151) and Mid fittings (66-12152) may have been installed incorrectly based on incorrect marking, i.e., the FWD deck fittings used in the Mid position and Mid Fittings used in the FWD position. Aft fittings are not affected.

1. Conduct a visual inspection of deck fittings to determine if they are installed correctly.
2. If these fittings are incorrectly installed, disassemble the strut assembly and place deck fittings in their correct position both FWD and Mid as well as left and right using the following drawings to determine and verify the correct location and orientation.
 - a. Reference A-10038 Service Manual for, hoisting, removal and installation instructions, and installation drawing number 66-12020 (6650 strut installation) or 66-11020 (6750 strut installation).

Tools Required:

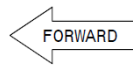
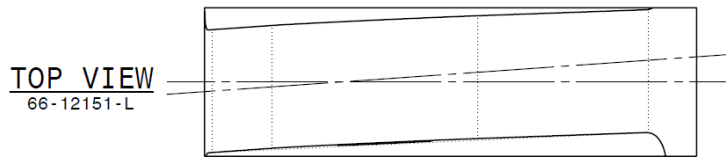
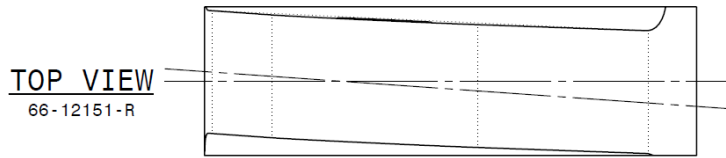
1. Inspection may require use of handheld calipers or micrometer, or a measuring scale.
2. Reinstallation will require a hoist and standard set of tools.

Inspection:

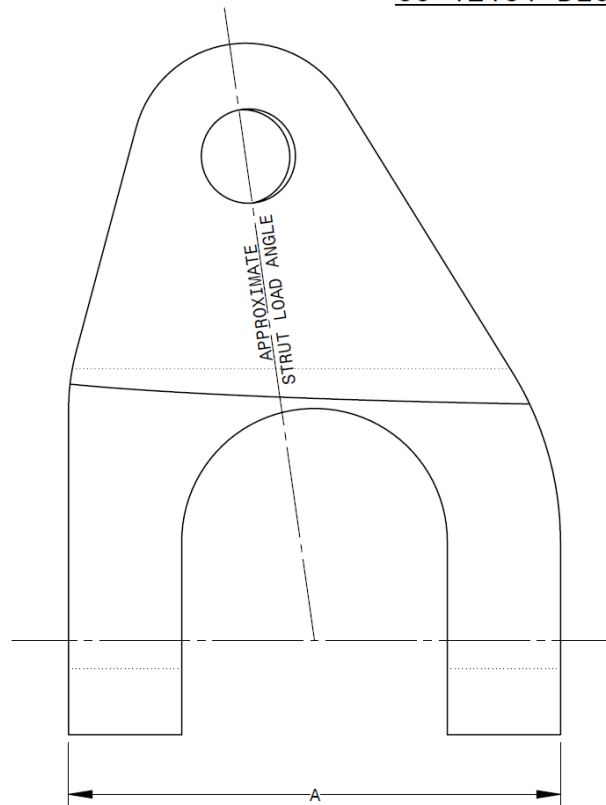
To verify the correct fitting for the FWD position, reference dimensions and orientations shown for 66-12151-L for the LHS and 66-12151-R (Opposite) for the RHS.

To verify the correct fitting for the Mid positions, reference dimensions and orientations shown for 66-12152-L for the LHS and 66-12152-R (Opposite) for the RHS.

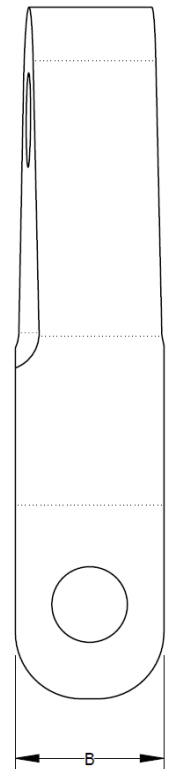
Reference Table 1 for values of Dimensions A and B.



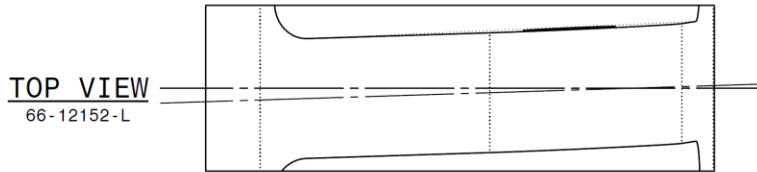
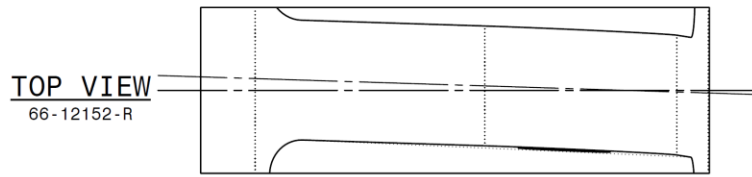
66-12151 DECK FITTING, FWD



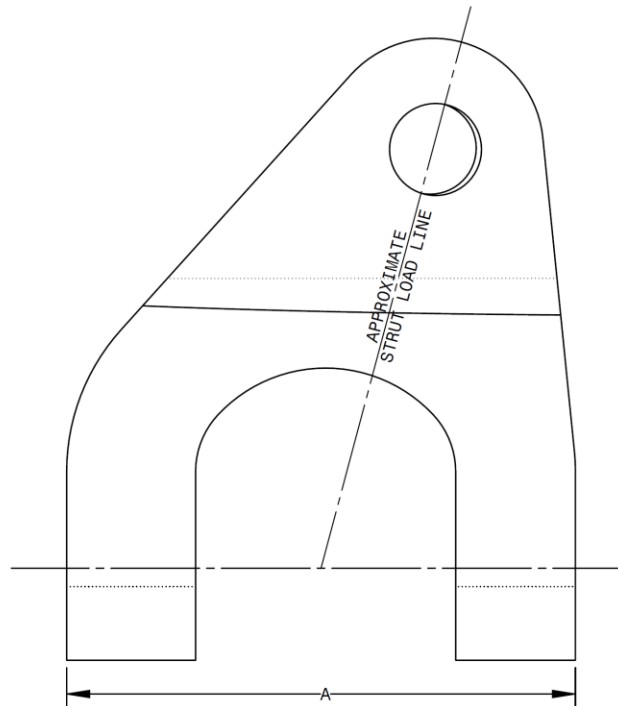
LHS VIEW
66-12151-L



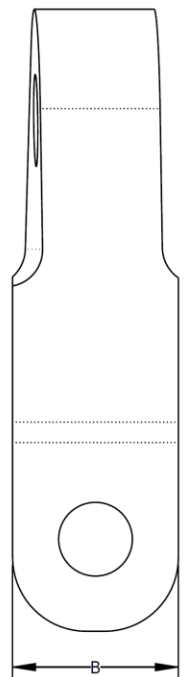
REAR VIEW
66-12151-L



66-12152 DECK FITTING, MID



LHS VIEW
66-12152-L



REAR VIEW
66-12152-L

TABLE 1 – Comparison of 66-12151 and 66-12152 fittings

PART NUMBER	DESCRIPTION	DIMENSION A	DIMENSION B
66-12151	DECK FITTING, FWD	3.260	0.984
66-12152	DECK FITTING, MID	3.453	1.125

Rev	Date	Summary of Change	Authorized by
I/R	09/29/2017	Initial Release	LM

-END-