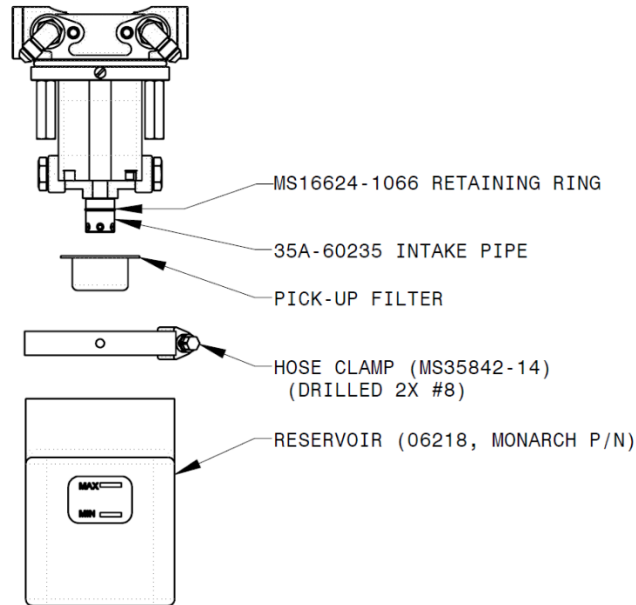


SERVICE LETTER SL56 35A-60200

1. **Release Date:** 08/22/2022
2. **Service Letter No.:** SL56 35A-60200 Rev I/R
3. **Subject:** Bi-Directional Hydraulic Electric Pump and Hydraulic Intake Pipe
4. **Part/Assembly No.:** 35A-60200 and 35A-60235
5. **Float Model (s) Affected:** 3400 Aerocet Floats
6. **Compliance:** Mandatory Recommended Optional
7. **Approval:** All information provided is in accordance with approved data.
8. **Corrective Action:** Non-required.
9. **Time Required:** Approximately 1.5 hrs. not including lifting of the aircraft, bleeding the system and completing gear swings.
10. **Payments:** Credit to Customer Under Warranty Customer Pays
11. **Call Parts Department (208) 448-0400 for Parts Kit**

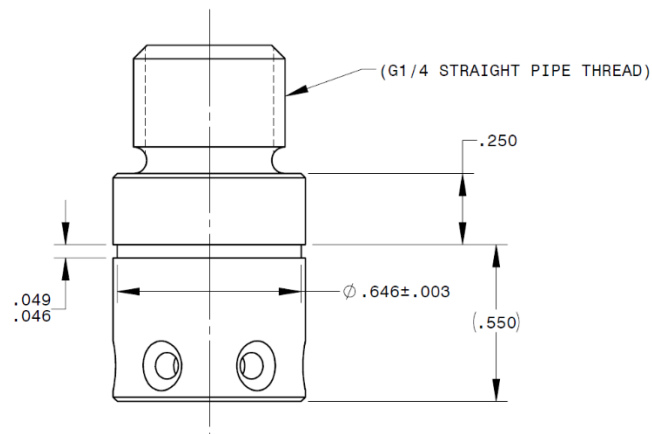
A retaining ring and safety wire has been added to improve suction screen installation on the hydraulic pump. Additionally, a snap ring groove to the hydraulic intake pipe was added to create a hard stop for the suction screen to seat against.

Hydraulic Electric Pump Exploded View, Simplified



35A-60235 HYDRAULIC INTAKE PIPE

ADDED snap ring groove to hydraulic intake pipe to create a hard stop for the suction screen to seat against. Part may be available for purchase from Aerocet, or, optionally, groove may be added as shown below.



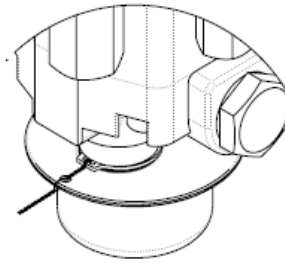
| Parts List for SL56 | | | |
|---------------------|--------------|----------------|---|
| QTY | Part Number | Description | Comments/Alternates |
| 1 | 35A-60235 | INTAKE PIPE | *OR MODIFY EXISTING WITH GROOVE SHOWN ABOVE |
| 1 | MS16624-1066 | RETAINING RING | |
| 1 | MS20995C20 | SAFETY WIRE | |

Examples of Attachment Techniques

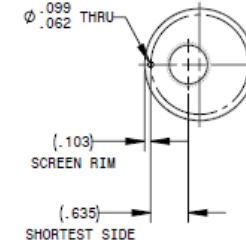
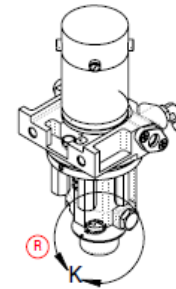
THE INFORMATION CONTAINED IN THIS DRAWING IS THE SOLE PROPERTY OF AEROCET, INC. ANY REPRODUCTION IN PART OR IN WHOLE, WITHOUT THE WRITTEN CONSENT OF AEROCET, INC. IS PROHIBITED.

SAFETY WIRE METHOD 1:

1. ALIGN THE FILTER HOLE AND RETAINING RING LUGS TO THE SHORTEST DISTANCE BETWEEN ONE ANOTHER.
2. SECURE MS20995C020 SAFETY WIRE TIGHTLY TO BOTH RETAINING RING LUGS, THEN TO FILTER.



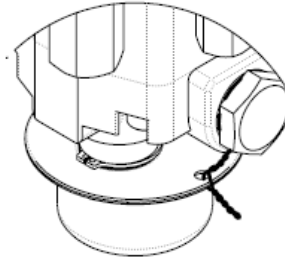
DETAIL K
SCALE 1 : 1
SAFETY WIRE METHOD 1



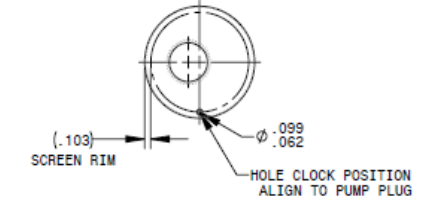
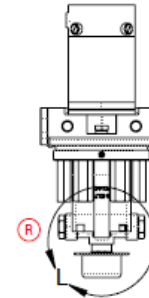
METHOD 1, HOLE ALIGNMENT

SAFETY WIRE METHOD 2:

1. ALIGN THE FILTER HOLE TO ONE OF THE PLUGS AT THE SIDE OF THE PUMP ASSEMBLY AS SHOWN.
2. SECURE MS20995C020 SAFETY WIRE TIGHTLY BENEATH THE PLUG HEX, THEN TO SUCTION SCREEN.



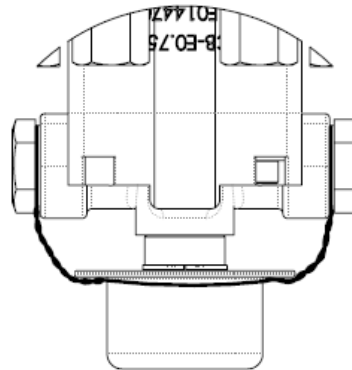
DETAIL K
SCALE 1 : 1
SAFETY WIRE METHOD 2



METHOD 2, HOLE ALIGNMENT

SAFETY WIRE METHOD 3:

1. NO ADDITIONAL HOLES IN SUCTION SCREEN RIM REQUIRED.
2. SECURE MS20995C020 SAFETY WIRE TIGHTLY BENEATH THE PLUG HEX, THEN ROUTE TIGHTLY BENEATH SCREEN RIM TO OPPOSITE PLUG.



DETAIL L
SCALE 1 : 1
SAFETY WIRE METHOD 3

| | | | | | |
|---|-----------|--|----------|-----------|------------|
| UNLESS OTHERWISE SPECIFIED DIMENSIONS ARE IN INCHES | | CAD GENERATED DRAWING, DO NOT MANUALLY UPDATE, DO NOT SCALE. | | | |
| TOLERANCES ARE: | | APPROVALS | | | |
| POSITIONS | DECIMALS | ANGLES | DRAWN | DJM | 6/18/2019 |
| ±N/A | .XX ±N/A | ±N/A° | CHECKED | | |
| RADIUS | .XXX ±N/A | | APPROVED | TH | 11/21/2019 |
| ±N/A | ±N/A | | FINISH | N/A | REV DRAWN |
| SURFACE | | REV DRAWN | | DJM | 6/15/2022 |
| | | USED ON | | 35A-60000 | REV APP'L |
| | | SCALE (CAD FILE): | | 1:4 | |

Priest River, Idaho
BI-DIRECTIONAL HYDRAULIC PUMP, AEROCET MODEL 3400 FLOATS

SIZE Dwg. No. **35A-60200** SHEET 8 OF 8
SCALE (CAD FILE): 1:4