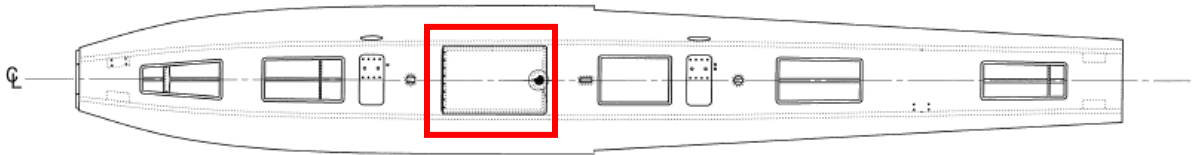


SERVICE LETTER SL50 35A-41008-SUPP

1. Release Date: 02/28/2022
2. Service Letter No.: SL50-35A-41008-SUPP
3. Subject: Retrofit for FWD Hinging Locker Door
4. Part/Assembly No.: 35A-41008-SUPP
5. Float Models Affected:
3400 Model Floats, Serial Numbers - 576-577 and previous
3500 Model Floats, Serial Number – ALL
3500L Model Floats, Serial Numbers – 1126-1127 and previous
6. Compliance: Mandatory Recommended Optional
7. Approval: All information provided is in accordance with approved data.
8. Corrective Action: Non-required.
9. Estimated Time Required: 2 hours per door
10. Payments: Credit to Customer Under Warranty Customer Pays

This service letter describes the removal of inboard hinging locker door and installation of a new forward hinging locker door. Installation details are similar to 35A-41008 with the addition of a 35-80018 beveled washer. Please refer to attached drawing 35A-41008-SUPP for installation details.



NOTES:

1. THIS DRAWING INTENDED TO PROVIDE INFORMATION NECESSARY TO ACCEPTABLY CONVERT INBOARD HINGING DOORS TO FORWARD HINGING DOORS.
2. REMOVE EXISTING DOOR PANEL, HINGE, LATCHES AND WEAR STRIPS.
3. FILL FASTENER HOLES WITH RESIN/CABOSIL MIXTURE. (ADD A SMALL AMOUNT OF GEL COAT FOR COLORATION.) USE MASKING TAPE ON THE OTHER SIDE OF THE HULL LAMINATES TO SUPPORT FILLER. CLEAN EXCESS FILLER. NO BURRS. ALLOW TO CURE.
4. SAND CURED FILLER TO SMOOTH, CONSISTENT SURFACE. CLEAN WITH ACETONE.
5. AREA BENEATH OLD HINGE (NOW EXPOSED) MAY BE DRESSED USING GEL COAT. ALL EXPOSED RESIN SHALL BE COATED WITH GEL COAT. (AREAS LOCATED BENEATH NEW WEAR STRIPS ARE PROTECTED AND DO NOT REQUIRE GEL COAT.)
6. NOTE: LOCKER DOOR OPENING WILL BE OFFSET SLIGHTLY FROM FLOAT C . (SEE SHEET 2)

PARTS KIT FOR 35A-41008-SUPP					
ITEM NO.	QTY	TYPE	PART NUMBER	DESCRIPTION	COMMENTS ALTERNATIVES
1	1	PART	10-10051	LATCH RAMP	NA
2	2	PART	35-22601-4	LOCKER WEAR STRIP, SIDE	NA
3	1	PART	35-22601-5	LOCKER WEAR STRIP, REAR	NA
4	1	PART	35-22601-6	LOCKER WEAR STRIP, FRONT	NA
5	8	PART	35-80018	SPACER, ANGLE, $\text{Ø}1/4''$	NA
6	1	ASSY	65-16510	LOCKER DOOR ASSEMBLY, FWD HINGED	NA
7	10	HRDWR	MS21083C3	NUT, SELF LOCKING, LOW HEIGHT, STAINLESS	NA
8	2	HRDWR	MS24694C53	MACHINE SCREW, FLAT COUNTERSUNK HEAD, 100°	NA
9	8	HRDWR	MS24694C59	MACHINE SCREW, FLAT COUNTERSUNK HEAD, 100°	NA
10	10	HRDWR	NAS1149C0363R	WASHER, FLAT STAINLESS	NA

-END-