

Service Letter #: SL04-35A-45025

Date: 3/5/12

Part/Assembly #: 35A-45000 Main Gear Installation, Actuator Mount

Float Model Affected: Model 3400 (All)

Symptom: Bolt hole wear, lower attach point of main gear hydraulic actuator. This would result in abnormally high water infiltration in the float locker(s).

Materials: As required following inspection, the following parts may be needed for each float, or may be included from Aerocet as part of a kit (35A-K45025).

Part Number	Description	QTY.
AN6-30	Bolt, Aircraft-Machine (Length A/R) (AN6-32 w/kit)	1
NAS1149D0663J or K (Alternate AN960PD616)	Washer, Flat	2 (QTY A/R)
NAS1149D0616J or K (Alternate AN960PD616L)	Washer, Flat	2 (QTY A/R)
NAS1523AA6B (Alt. Parker P/N 600-15-3/8)	Stat-O-Seal	1
7500-3/8	Thread Seal	1
AN310-6	Nut, Castellated	1
MS24665-300	Cotter Pin	1

Action - At next Annual Inspection or with excessive water in locker compartment:

Inspection:

- 1) With aircraft Master "OFF", pull float gear pump 25A circuit breaker.
- 2) Securely hoist or lift the aircraft according to procedures in the Airplane Maintenance Manual or per Aerocet A-10031 Service & Maintenance Manual, Model 3400 Amphibious Floats. Assure that all weight is removed from the main wheels and that the aircraft is stable and secure.
- 3) Assure that all hydraulic pressure is relieved by cycling the hand pump selector in both directions.
- 4) Open float locker and locate the lower actuator mount and the attachment hardware for the actuator.
- 5) Remove the lower attachment hardware to expose the installation hole for unobstructed view. (Actuator does not require complete removal unless desired.)
- 6) Visually inspect (with the aid of flashlights, mirrors, etc.) the condition of the bolt hole. A worn hole will have become oblong, allowing some movement of the actuator and allowing water leakage in this area. This condition is the result of wear caused while the actuator is in the retracted position - the main gear in the deployed condition. The hydraulic actuator exerts a great amount of force

between this hole and the stop bracket (not shown) in the gear well. Normal wear, accentuated by debris is the most likely, but not the only possible cause.

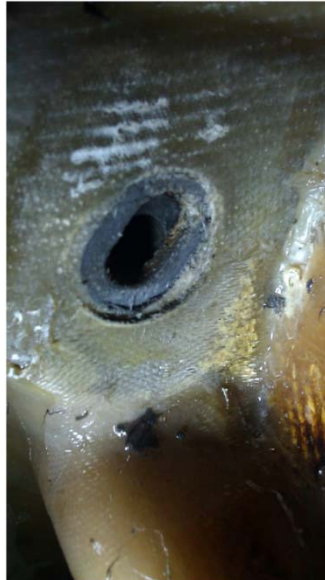


Figure 1 – Showing inspection Side view. (See Figure 2 for Top)

Aerocet offers a reinforcement kit, 35A-K45025 which increases the bearing area around the hole by bonding a reinforcement to the affected area. This information will also become available in later versions of the Aerocet service and maintenance manual and Illustrated Parts List.

If this condition is found during inspection, then follow the instructions offered in the drawing provided in the kit before returning the aircraft to service.

Tools Needed: (Inspection)

1. Standard assortment of hand tools such as sockets and end wrenches.
2. Work light or flashlight.
3. Inspection mirror.
4. Calibrated Torque wrench to re-assemble. Required bolt torque is 20-30 in-lbs.

END -